

Chippewa Falls Mission Coalition Agenda – Monday, Feb. 2, 2026

PLACE: Our Saviour's Lutheran Church, 1300 Mansfield St., Chippewa Falls, WI

- * Introductions and Prayer Requests
- * Open Meeting With Prayer – Pastor Chad Anderson

* **Guest Speaker:** Josh Kilde (josh.kilde@lifespringfellowship.org) & Krystle Zakrzewski (chippewavalley@safefamilieswi.org)

Subject: Safe Families For Our Children

- Local, National, and International Effort
- Now 9 service areas in Wisconsin
- Founded in 2003; Wisconsin launched in 2014

A Family Preservation Mission:

-- Goal is to keep children safe and families together ... and reduce the amount of children who enter the foster care system through radical hospitality, disruptive generosity, and intentional compassion

Matthew 25:40 - "Truly I tell you, whatever you did for one of the least of these brothers and sisters of mine, you did for me."

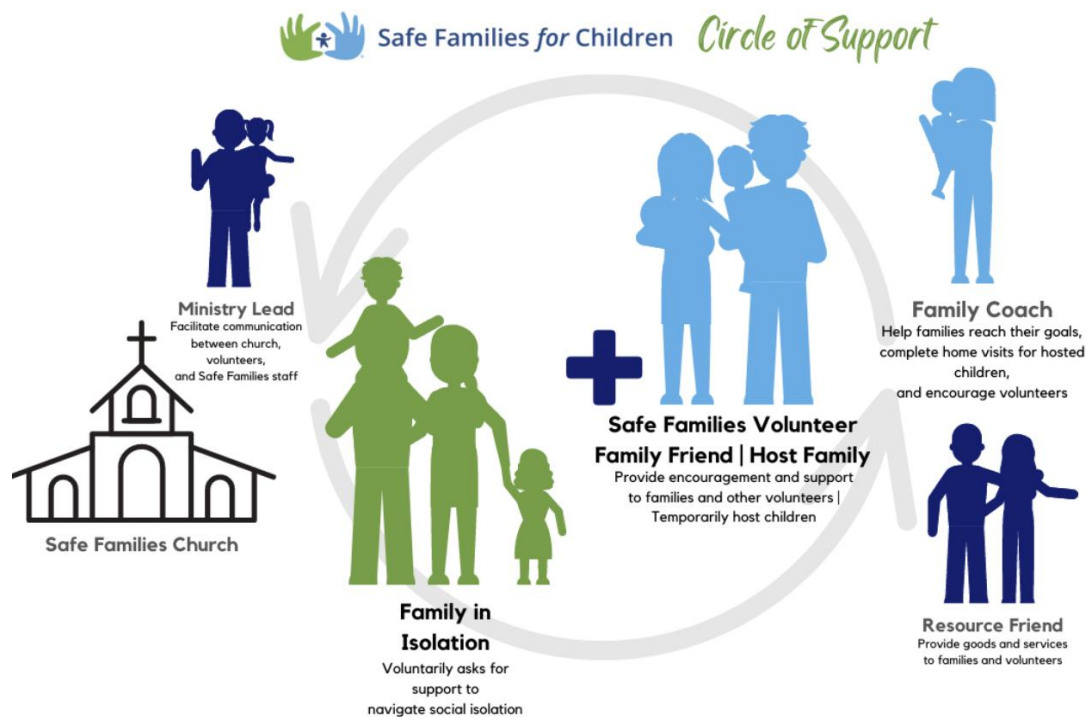
What we do: Support families in social isolation (with background checked volunteers from our congregations)

Who We Host:

- Children: newborns through teens (0-18 years)
- About 70% of children we serve are less than 6 years old
- Sometimes, hosting arrangements have been made for teenage mothers and their children
- Referrals come from hospitals, daycares, schools, police stations, Department of Human Services, self-referrals, etc.
- Parents do NOT lose custody

Circle of Support:

- Volunteers are supported and families are supported
- Families would be connected to the closest geographical church to them.
- Various ways to become involved with Safe Families For Our Children ...
 - **Family Friends:** provide friendship and support to parents or host families through getting together, encouragement, transportation, hot meals, etc.
 - **Family Coaches:** walk alongside and encourage parents to help them set and reach their goals, as well as support volunteers
 - **Host Families:** are screened and approved by Safe Families staff to host children for short periods of time. (Average length is 4 weeks, and can be as short as a few hours.)
 - **Resource Friends:** provide tangible items to families such as meals, diapers, cleaning goods, etc. as needed
 - **Ministry Leads:** recruit and support volunteers in their church



Fundraising effort going on currently:

- Once fully funded, they will hire a local director for Chippewa Valley.
- Onboarding volunteers right now at 2-3 churches and hope to be ready to start in the next three months
- Safe Families pays the expense for background checks
- All funds stay in state and local
- Bringing on an Advisory Board soon

A majority of families could have avoided the child welfare system if they had support; even one single support person makes a difference.

Q: You're having a kick-off event?

A: SFFC can do workshops with your group so they know next steps and training. It's only a workshop, not a commitment. If you would like to learn more about this mission, they will be having an informational meeting on February 15th at St. James in Eau Claire, 2502 11th St., at 11:30 a.m.

Q: Does SFFC cover liability?

A: Yes, umbrella liability policy for driving and other coverage

Q: What if a host has concerns about the family?

A: Family Coach volunteer role supports families with their goals. Families can step away from the SFFC program if they are not working towards goals. They can come back when ready.

Q: How often or how many families will be partnered with a church?

A: A church might have multiple families; it depends on your capacity. Your church may have several ‘circles of support’ for different families. The ministry lead determines capacity for additional partnerships.

National website: <https://safe-families.org/>

Local website: <https://safefamilieswi.org/>

*** Mission Update:** LSS Reopening of the former Libertas Center. (Paul Peterson, Manager of Donor Relations, Lutheran Social Services of Wisconsin & Upper Michigan)

- LSS WI main office is Milwaukee; Paul is local
- Residential treatment for men and women
 - Over fifty years providing services
 - 2 facilities in Eau Claire
 - Fahrman Center - 42 bed co-ed; Affinity - 18 bed women only
- When HSHS closed, so did Libertas Center.
- LSS purchased the facility from HSHS in March of 2025 and got Chippewa Falls permits. No objections from the area.
- \$3 million campaign; receiving great support. About \$1 million to go to finish renovations due to unforeseen plumbing issues.
- Hope to be done with remodel at end of February 2026
- **Will open at some point during Quarter 2 of 2026.** Will have an open house before residents and staff come in - stay tuned!
- **Will be named LSS L.E. Phillips Recovery Center**
 - 50 bed men-only
- Here is the link to our Northwest WI campaign donate page and the info handout from the meeting: <https://www.lsswis.org/lovebig/>
 - If you have questions, please contact Paul at paul.peterson@lsswis.org or 715-828-9532
- **Q: Will this location have detox?**
- **A:** No. Partnering with Chippewa Co-op and Rogers Health. None of LSS facilities do detox.

*** Mission Question:** “Lather With Love” Soap Mission – April (Tom Drehmel)

- It was decided we will once again be collecting laundry detergents and other soap-related items donations in April 2026 for our “Lather With Love” soap mission.
 - In 2025 we collected 2,600 soap-related items and distributed them to five local pantries.
 - Our Saviour’s Lutheran will be the main collection point this year.
 - “Thank You” to Central Lutheran for being the collection point since 2011.
 - Dates coming soon for when it starts in April and when it ends. Stay Tuned!
 - **Q: Are we collecting quarters for Lighten Your Load at the same time?**
 - **A:** Up to each church! LYL is willing to receive your donation, but it doesn’t HAVE to be in combination with Lather with Love
-

* **Mission Question:** 2026 CFMC Community Meals for Easter, Thanksgiving, Christmas?? (Tom Drehmel)-- 2025 Hosts: Easter-St. Charles Borromeo Catholic, Thanksgiving-Central Lutheran, Christmas-First Presbyterian.

- St Charles will do Easter meal again!
- First Presbyterian will do Christmas meal again!
- Central will do the Thanksgiving meal again!
- Dates to be determined.
- CFMC will be contacted for volunteer opportunities at each of those meals.

* **Mission Update:** Hope Village/Tiny Houses (Mike Cohoon)

- Indianhead Motel, Affordable Housing Progress
 - Some delays. Project should still finish in June
- 8 Hope Village Affordable Housing Units currently filled. 3 bedroom unit is available. One duplex is available.
- 4 Tiny Houses open, but 3 are being filled in next 7-10 days
 - Seeing more single men and women recently
- Possible Building Project with Cadott High School
- Quarter Auction Fund Raiser – Feb. 28th
 - Looking for sponsors and baskets worth \$25-\$50

* **Mission Update:** “Lighten Your Load” Family Laundry Mission. (Gayle Klitzke)
Volunteers? Funds?

- Covered fairly well with volunteers/supplies
- Located at Express Mart Laundromat ... 805 N. Bridge St Chippewa Falls
 - First and third Tuesdays from 6-8pm
 - First and third Thursdays from 1-3pm
- Stats from 2025
 - 1061 loads washed and dried
 - 439 participants; more new people coming (25 new people in 2025)
 - People are bringing more loads. For example, 19 people had 5 loads
 - \$4800 expenses; \$4500 income.
 - More people come on Tuesday nights than Thursday afternoons.
 - 21 volunteers across 48 sessions. Thank you, volunteers!

* **Other Business/Announcements**

- “100 Nights Of Shelter” Campaign sponsored by LE Phillips CDC Outreach. (Karri Pitsavas ... pitsavask@lecdc.org ... 715-861-5002.
 - Currently at 92 nights covered at \$80 a night.
- CFMC 2025 Year-In-Review available. (Tom Drehmel ... tdrehmel@me.com)
- English Lutheran of Bateman is planning a series on Dietrich Bonhoeffer in May on Thursdays. Stay tuned for more details.
- Chippewa Falls High School National Honor Society and Future Business Leaders of America collected shoes from Dec. 1 thru Jan. 31st ... “Shoes For A Cause.” St. Charles collected shoes for this mission and passed the word to the CFMC churches/non-profit organizations to encourage them to participate as well. The students received 40 cents per pound with all proceeds going to Agnes’ Table. Update next month on final tally.

- St Patrick's Day Dinner at Christ Episcopal - Community Fundraiser – Details to Follow.
- Annual Report for the Community Foundation of Chippewa Co. was made available to the CFMC at the meeting.

*** Next Meeting – April 6, 2026 at First Presbyterian**

No March Meeting ... currently meeting every other month (Even Months)

- June 1st meeting will be at Trinity UMC

Respectively Submitted by Kari Allen

CFMC Mission Statement: "Faithful people joining hearts and hands to be God's Love in action for our neighbors near and far."

CFMC Bible Verse: Psalm 60:12 – "With God's Help We Will Do Mighty Things."

- **WEBSITE:** cfmissioncoalition.org -- **FACEBOOK:** facebook.com/cfmissioncoalition